

Figure E-84 Housing Opportunity Sites by Racially Concentrated Areas of Affluence (Craig Park, Acacia Park, Artisan Walk, Deerpark Dr/Sherwood Ave)

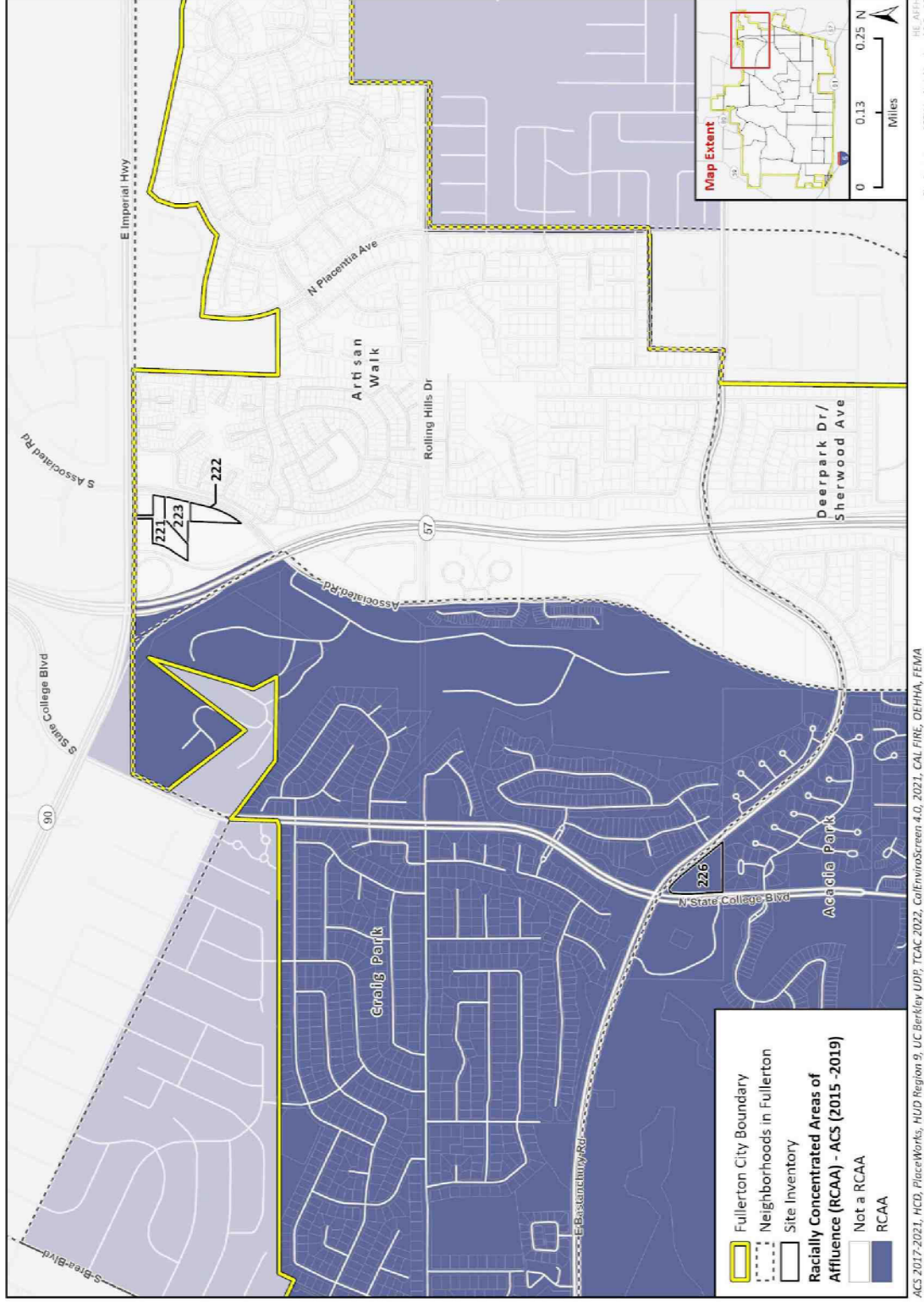
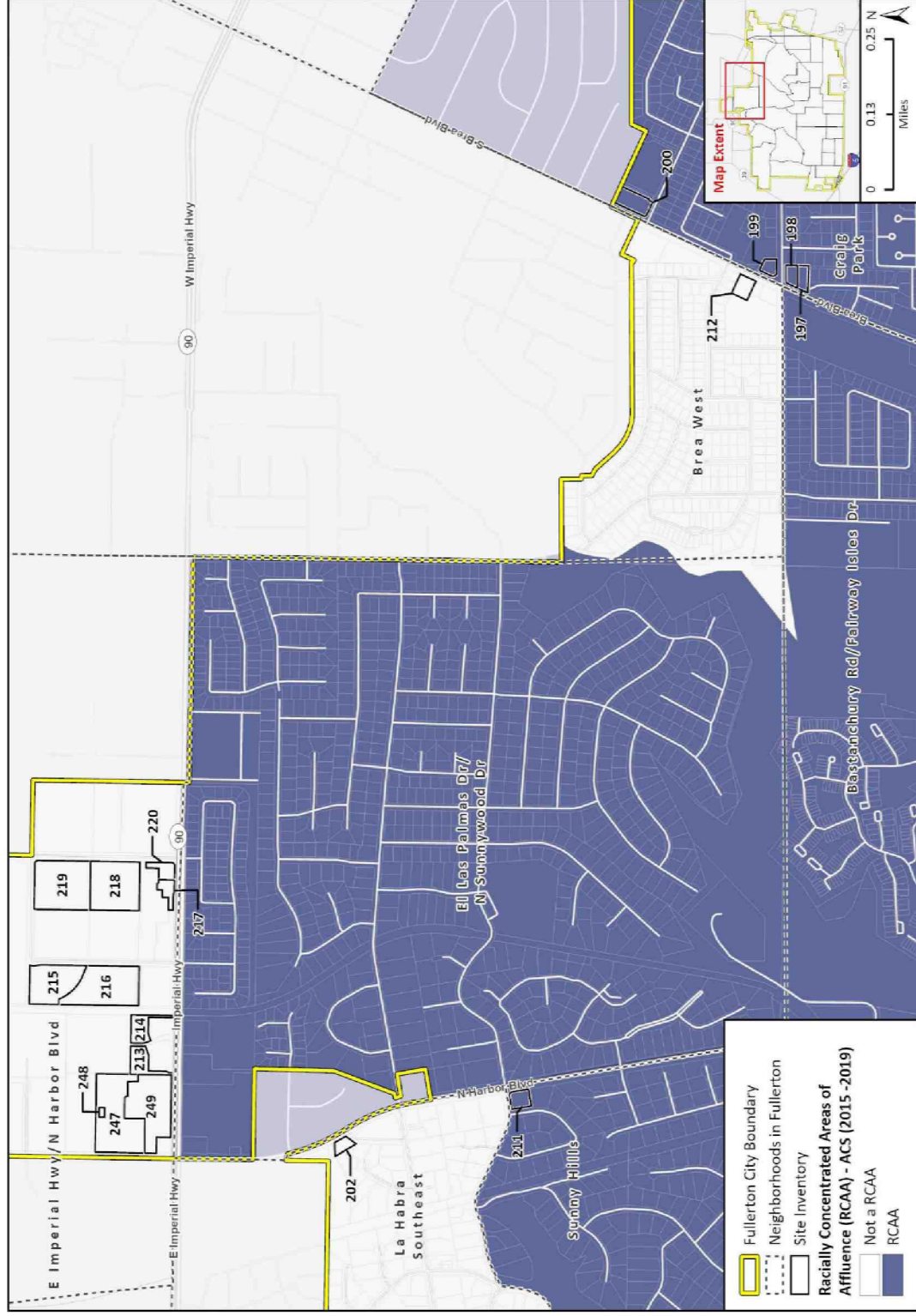


Figure E-85 Housing Opportunity Sites by Racially Concentrated Areas of Affluence (E Imperial Hwy/N Harbor Blvd, La Habra Southeast, Sunny Hills, El Las Palmas Dr/N Sunnywood Dr)



ACS 2017-2021, HCD, PlaceWorks, HUD Region 9, UC Berkeley UDP, TCAC 2022, CalEnviroScreen 4.0, 2021, CAL FIRE, OEHHA, FEMA
Site Inventory - AFFH by Neighborhood B5 x 11 HE AFFH

Figure E-86 Housing Opportunity Sites by Racially Concentrated Areas of Affluence (West Coyote Hills, Amerige Heights, La Habra South, W Commonwealth Ave/N Masque Ave, Independence Park, Sunny Hills, Santa Fe District/SoCo)

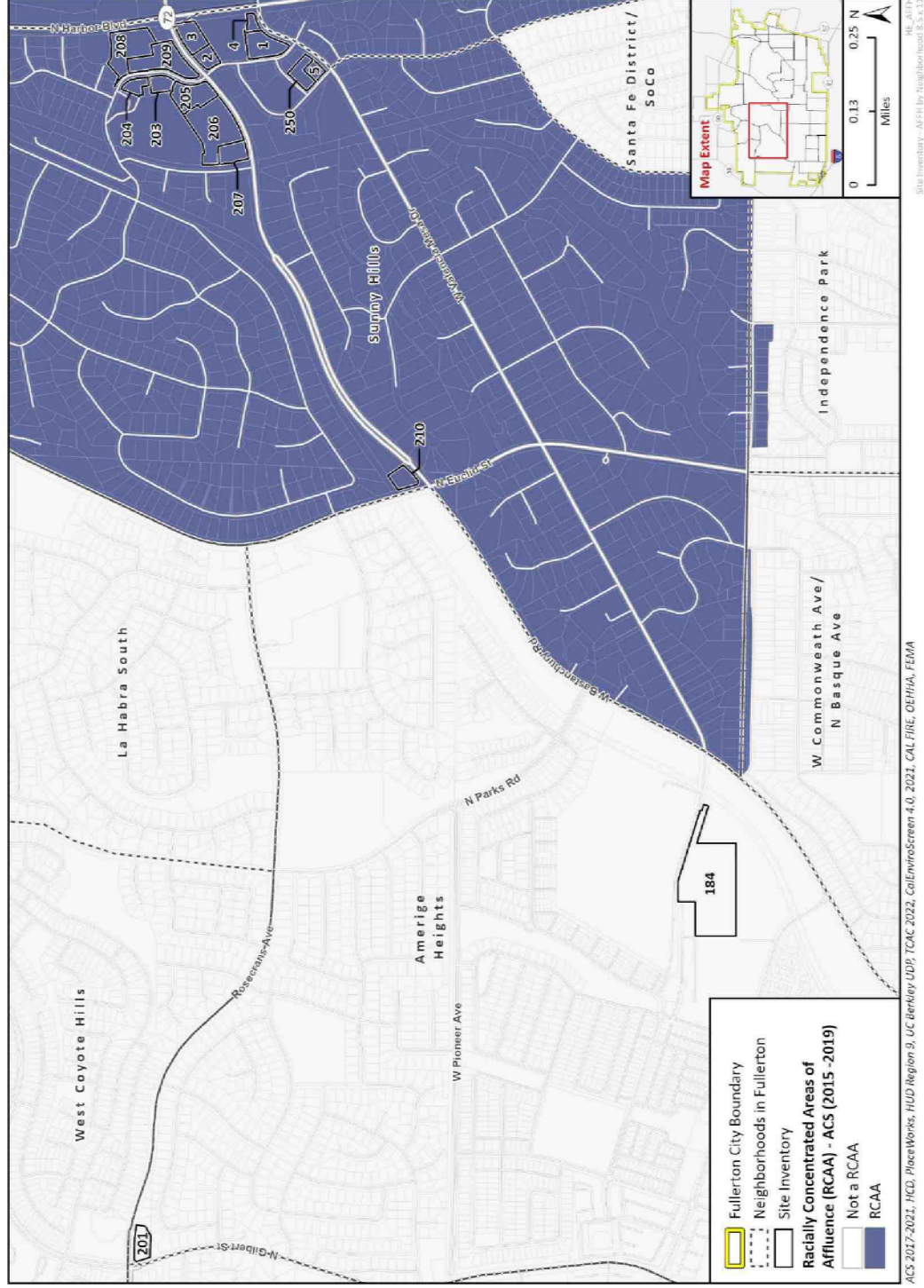
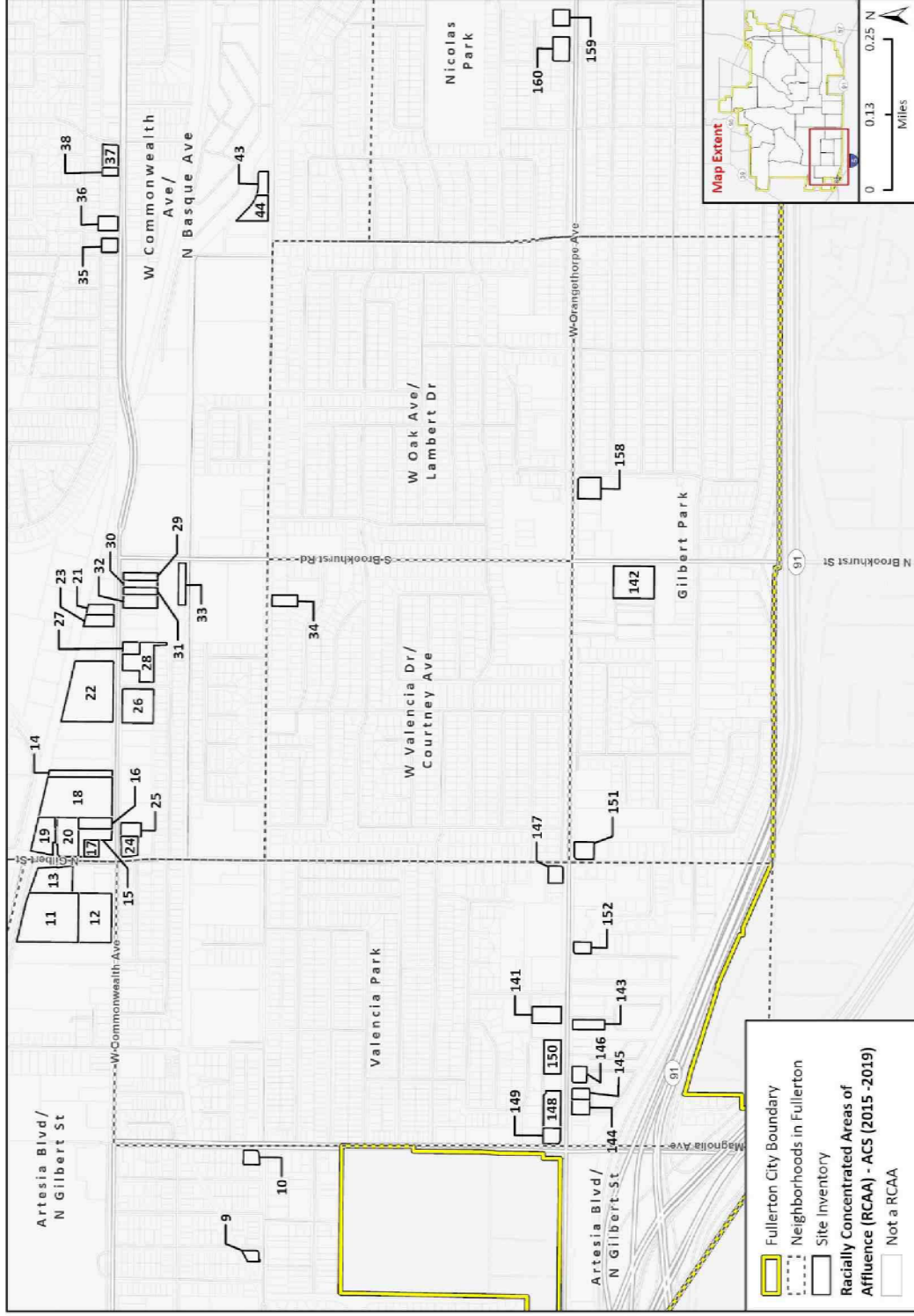


Figure E-87 Housing Opportunity Sites by Racially Concentrated Areas of Affluence (Artesia Blvd/N Gilbert St, Valencia Park, W Valencia Dr/Courtney Ave, Gilbert Park, W Commonwealth Ave/N Basque Ave, W Oak Ave/Lambert Dr, Nicolas Park)



ACS 2017-2021, HUD, PlaceWorks, HUD Region 9, UC Berkeley UDR, TCAC 2022, CalEnviroScreen 4.0, 2021, CAL FIRE, OTHHA, FEMA

Figure E-88 Housing Opportunity Sites by Racially Concentrated Areas of Affluence (Nutwood Ave/N Mountain View Pl, California State University Fullerton, Bradford Park, Deerpark Dr/Sherwood Ave)

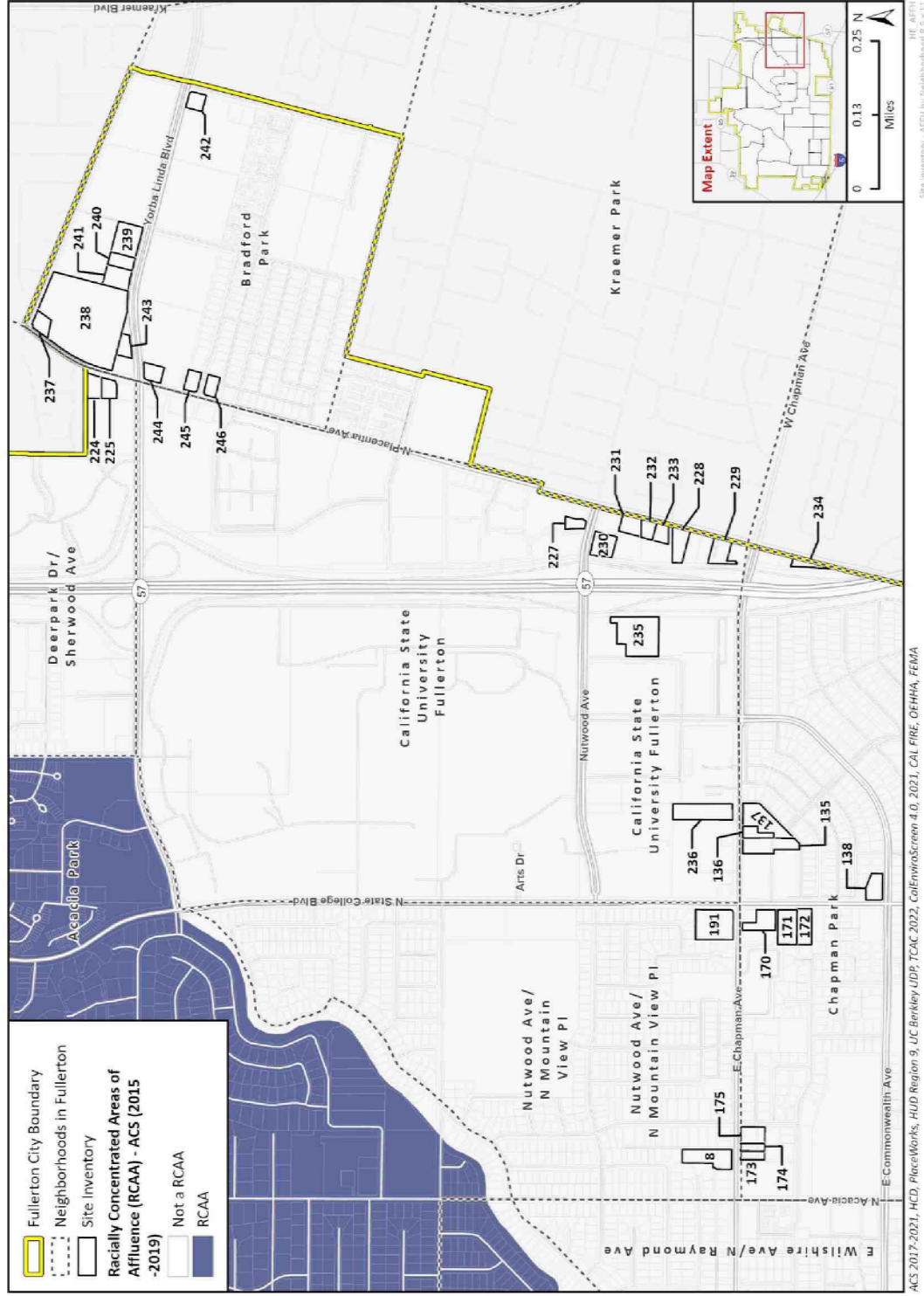
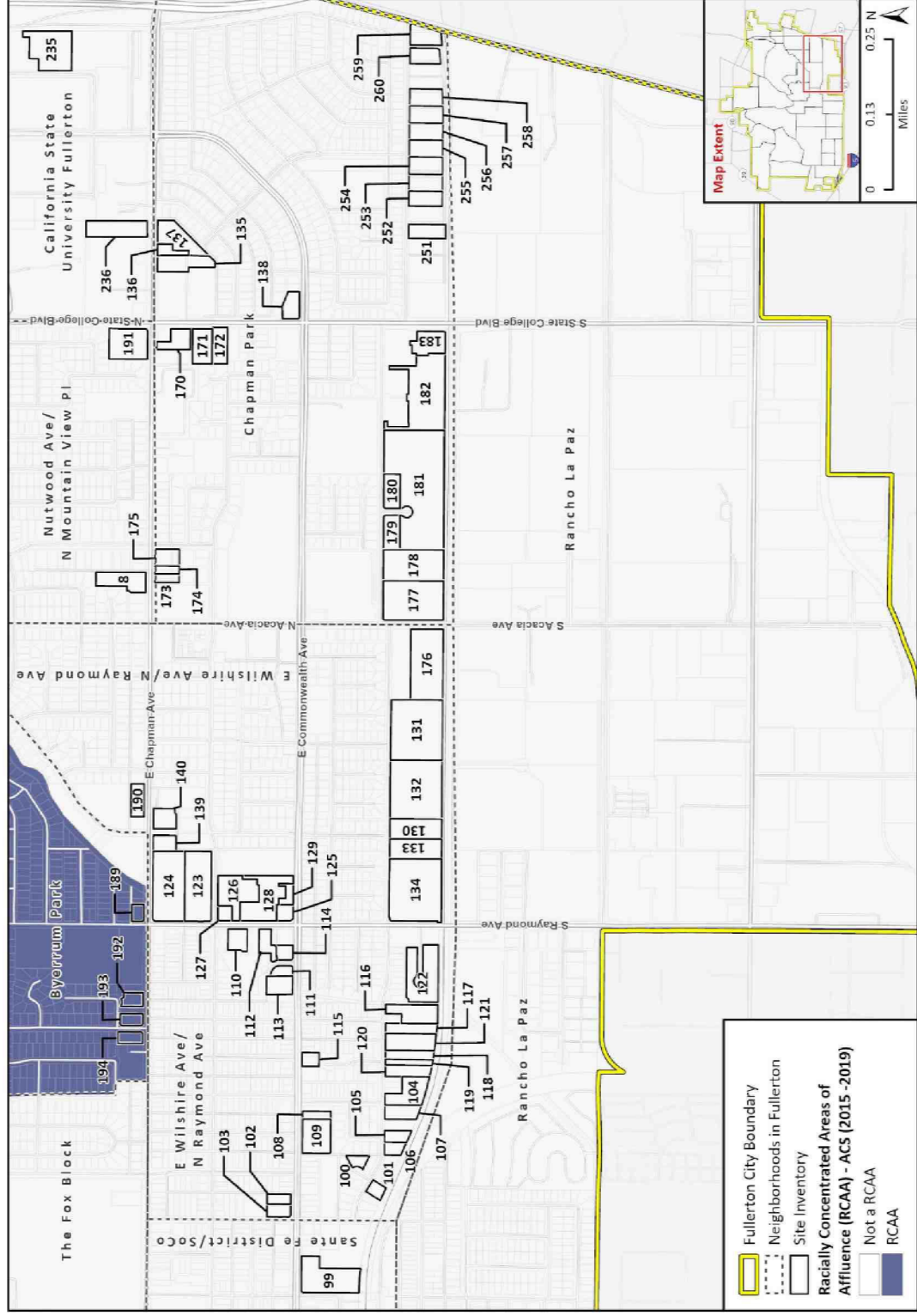


Figure E-89 Housing Opportunity Sites by Racially Concentrated Areas of Affluence (The Fox Block, Byerrum Park, Rancho La Paz, Nutwood Ave/N Mountain View Pl, Chapman Park, California State University Fullerton)



ACS 2017-2021, HCD, PlaceWorks, HUD Region 9, UC Berkeley UDP, TCAC 2022, CalEnviroScreen 4.0, 2021, CAL FIRE, OEHHA, FEMA

Figure E-90 Housing Opportunity Sites by Racially Concentrated Areas of Affluence (W Commonwealth Ave/N Basque Ave, Nicolas Park, Independence Park, S Wood Ave/W Orangethorpe Ave, Woodscrest Park, Rancho La Paz, Santa Fe District/SoCo)

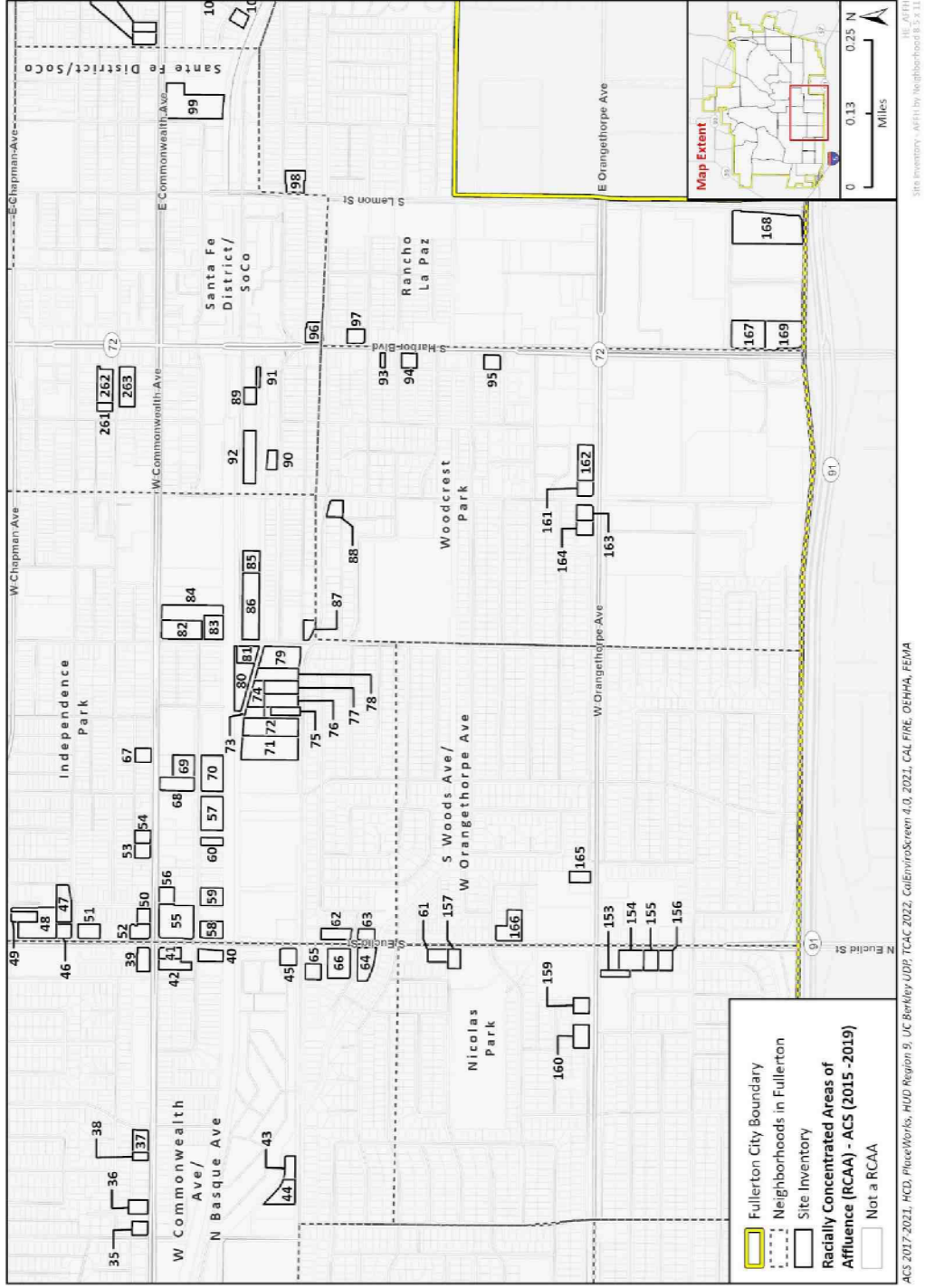
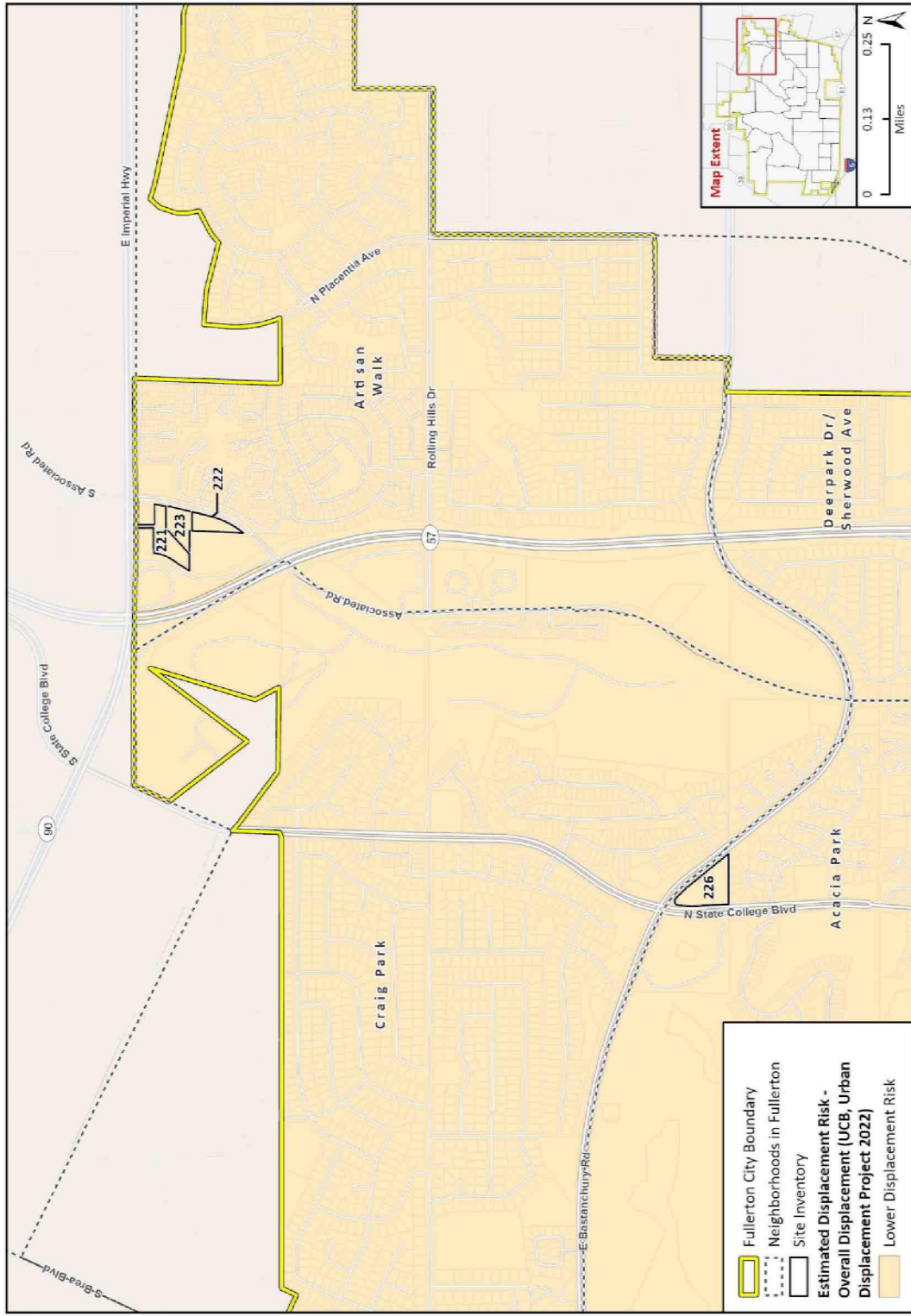
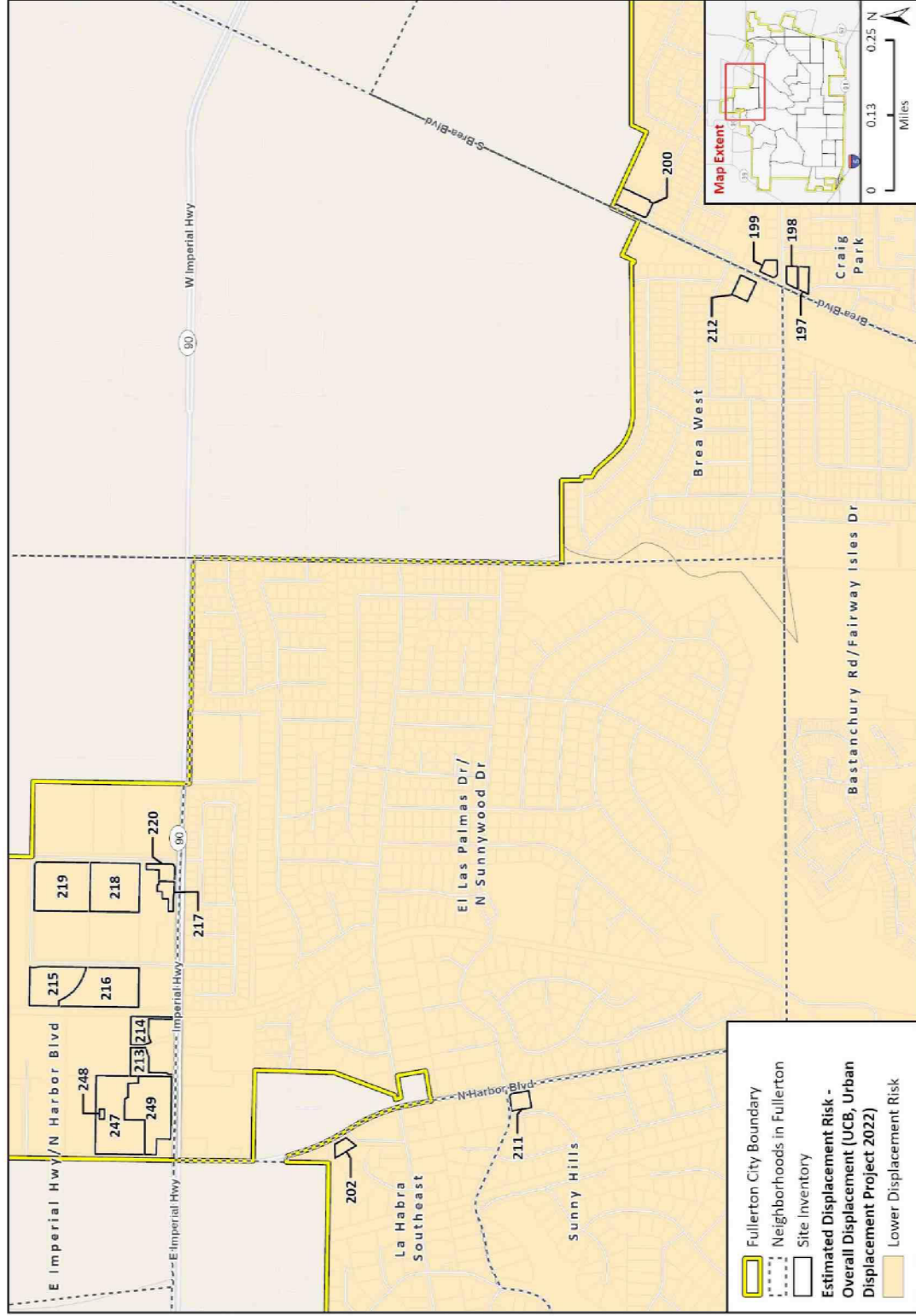


Figure E-92 Housing Opportunity Sites by Displacement Risk (Craig Park, Acacia Park, Artisan Walk, Deerpark Dr/Sherwood Ave)



ACS 2017-2021, HCD, PlaceWorks, HUD Region 9, UC Berkeley, UOP, TCAC 2022, CalEnviroScreen 4.0, 2021, CAL FIRE, OEHHA, FEHA

Figure E-93 Housing Opportunity Sites by Displacement Risk (E Imperial Hwy/N Harbor Blvd, La Habra Southeast, Sunny Hills, El Las Palmas Dr/N Sunnywood Dr)



ACS 2017-2021; HCD, PlaceWorks, HUD Region 9, UC Berkeley UDP, TCAC 2022, CollEnviroScreen 4.0, 2021, CAL FIRE, OEHHA, FEMA

Figure E-94 Housing Opportunity Sites by Displacement Risk (West Coyote Hills, La Habra South, Amerige Heights, La Habra South, W Commonwealth Ave/N Masque Ave, Independence Park, Sunny Hills, Santa Fe District/SoCo)

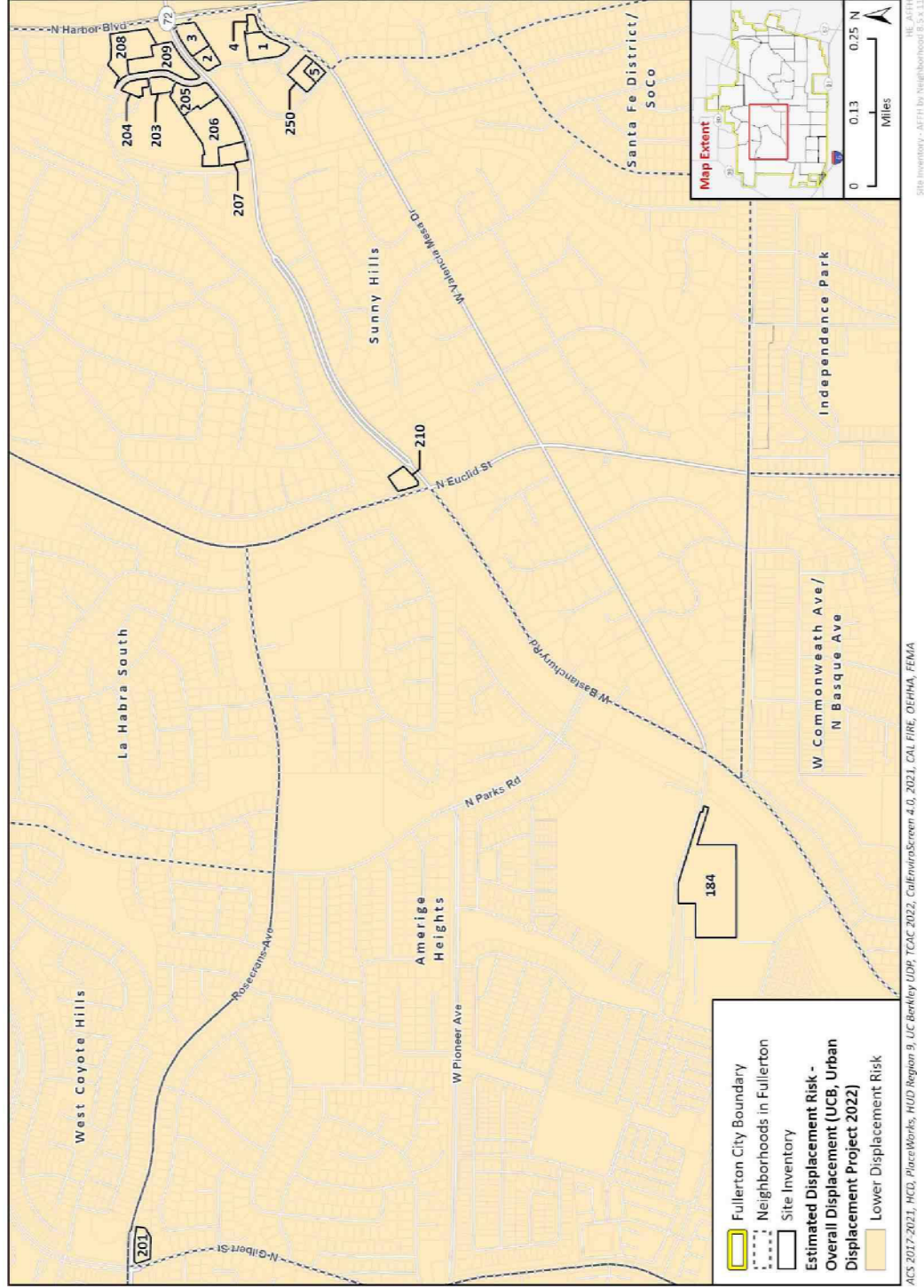
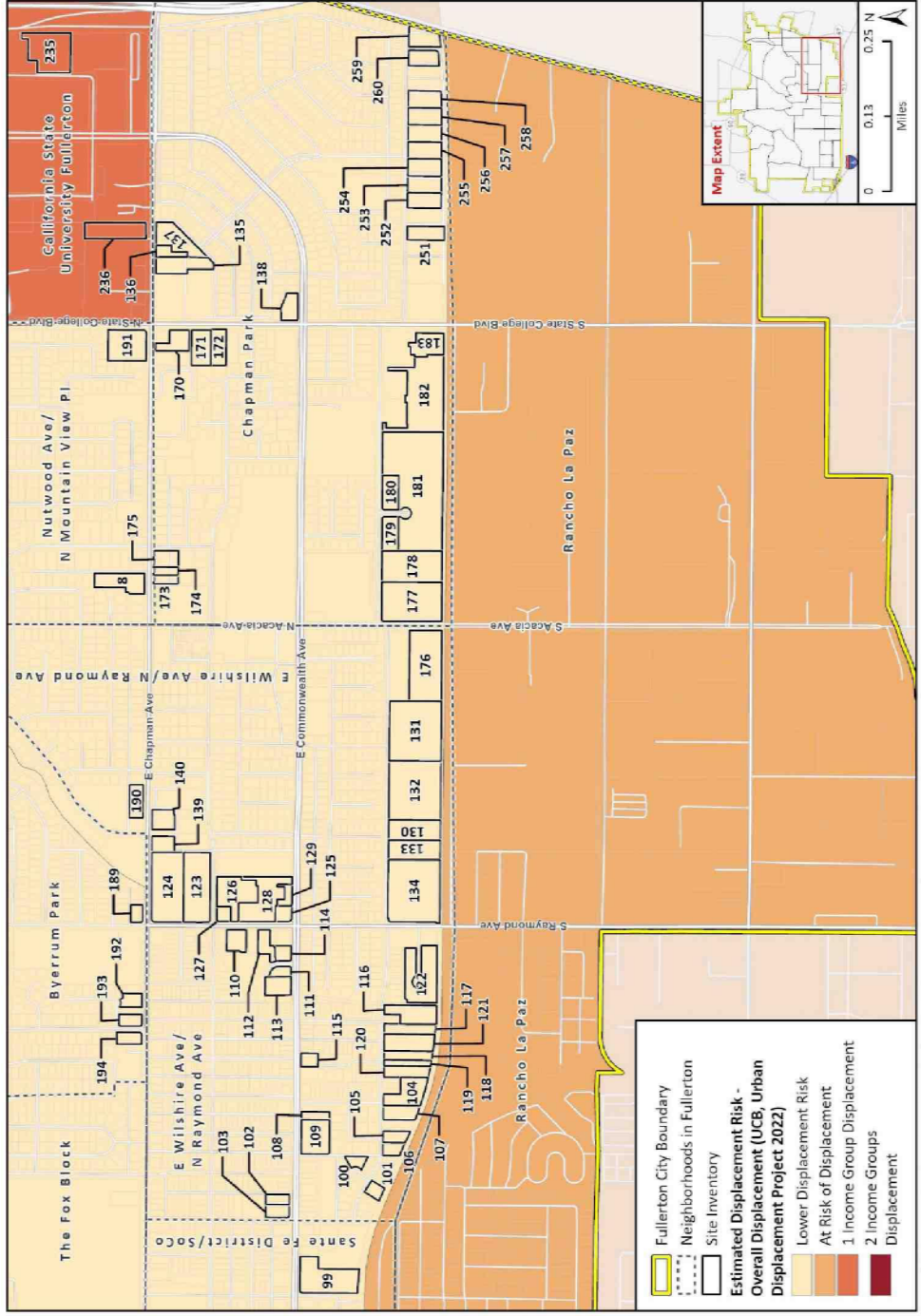


Figure E-97 Housing Opportunity Sites by Displacement Risk (The Fox Block, Byerrum Park, Rancho La Paz, Nutwood Ave/N Mountain View Pl, Chapman Park, California State University Fullerton)



ACS 2017-2021, HCD, PlaceWorks, HUD Region 9, UC Berkeley UDR, TCAC 2022, CaliforniaScreen 4.0, 2021, CAL FIRE, OEHHA, FRMA

Figure E-98 Housing Opportunity Sites by Displacement Risk (W Commonwealth Ave/N Basque Ave, Independence Park, Nicolas Park, Woodcrest Park, Independence Park, S Wood Ave/W Orangethorpe Ave, Woodcrest Park, Rancho La Paz, Santa Fe District/SoCo)

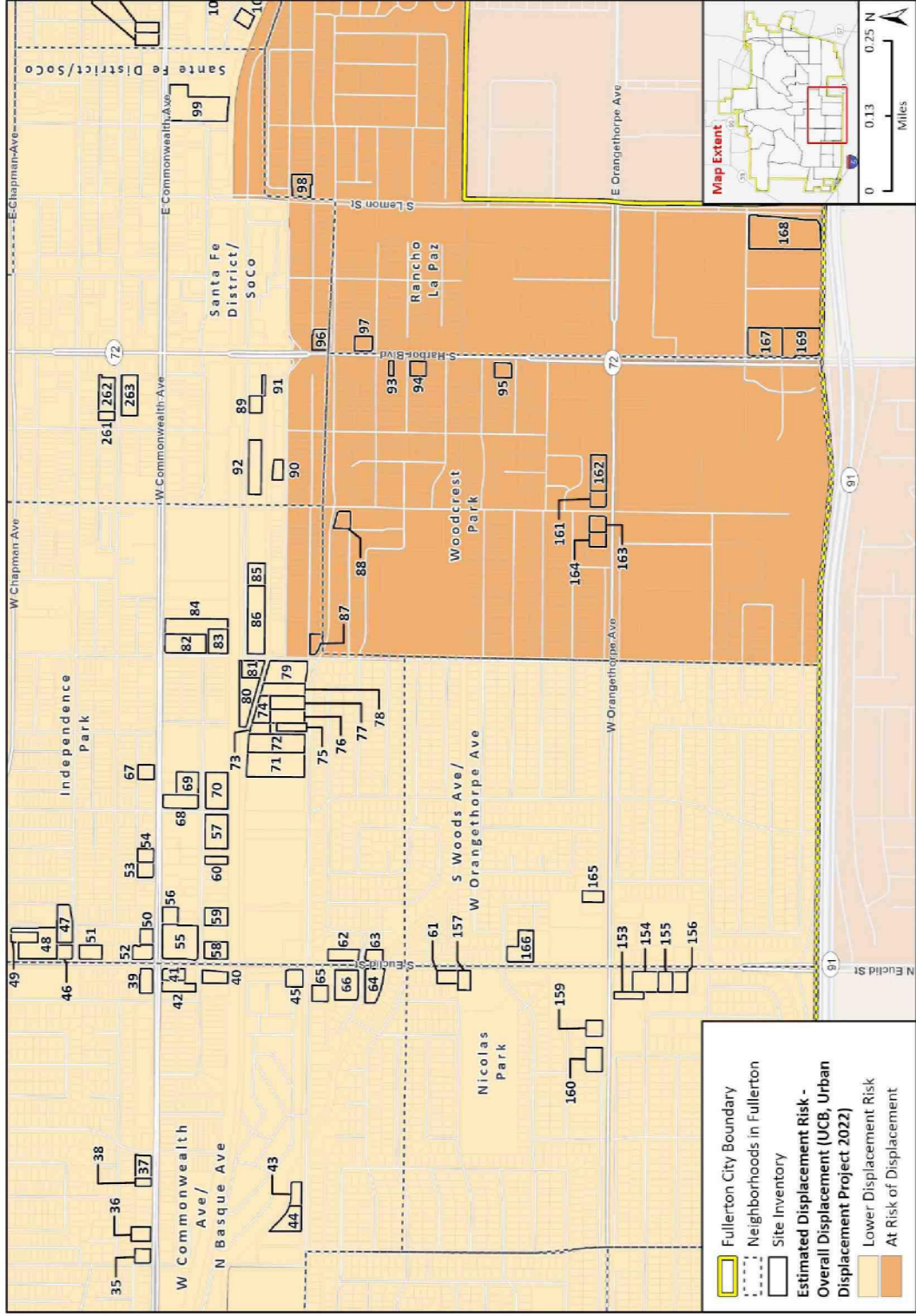


Figure E-99 Housing Opportunity Sites by Displacement Risk (Sunny Hills, Santa Fe District/SoCo, Bastanchury Rd/Fairway Isles Dr, The Fox Block)

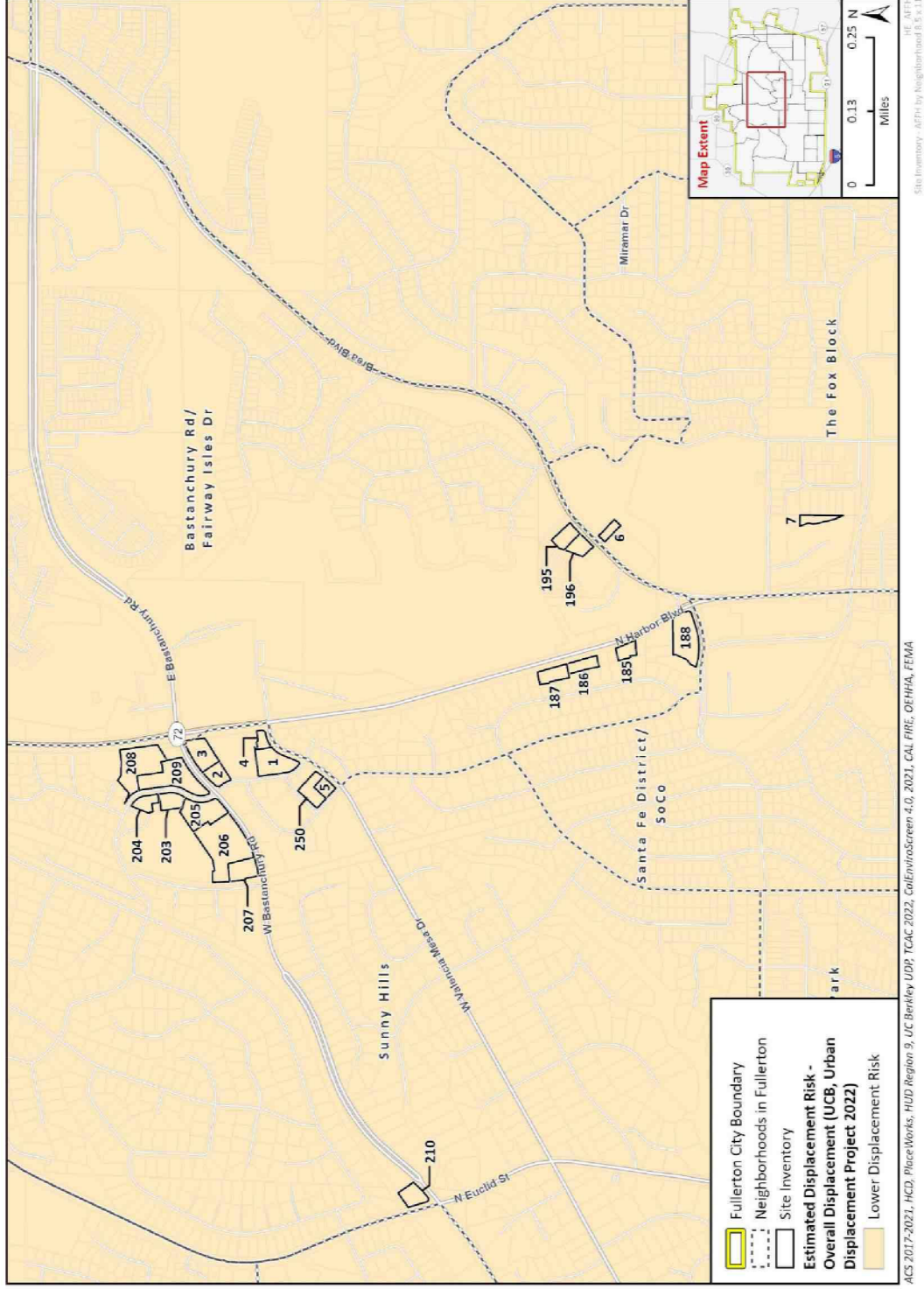


Figure E-100 Housing Opportunity Sites by CalEnviroScreen Score (Craig Park, Acacia Park, Artisan Walk, Deepark Dr/Sherwood Ave)

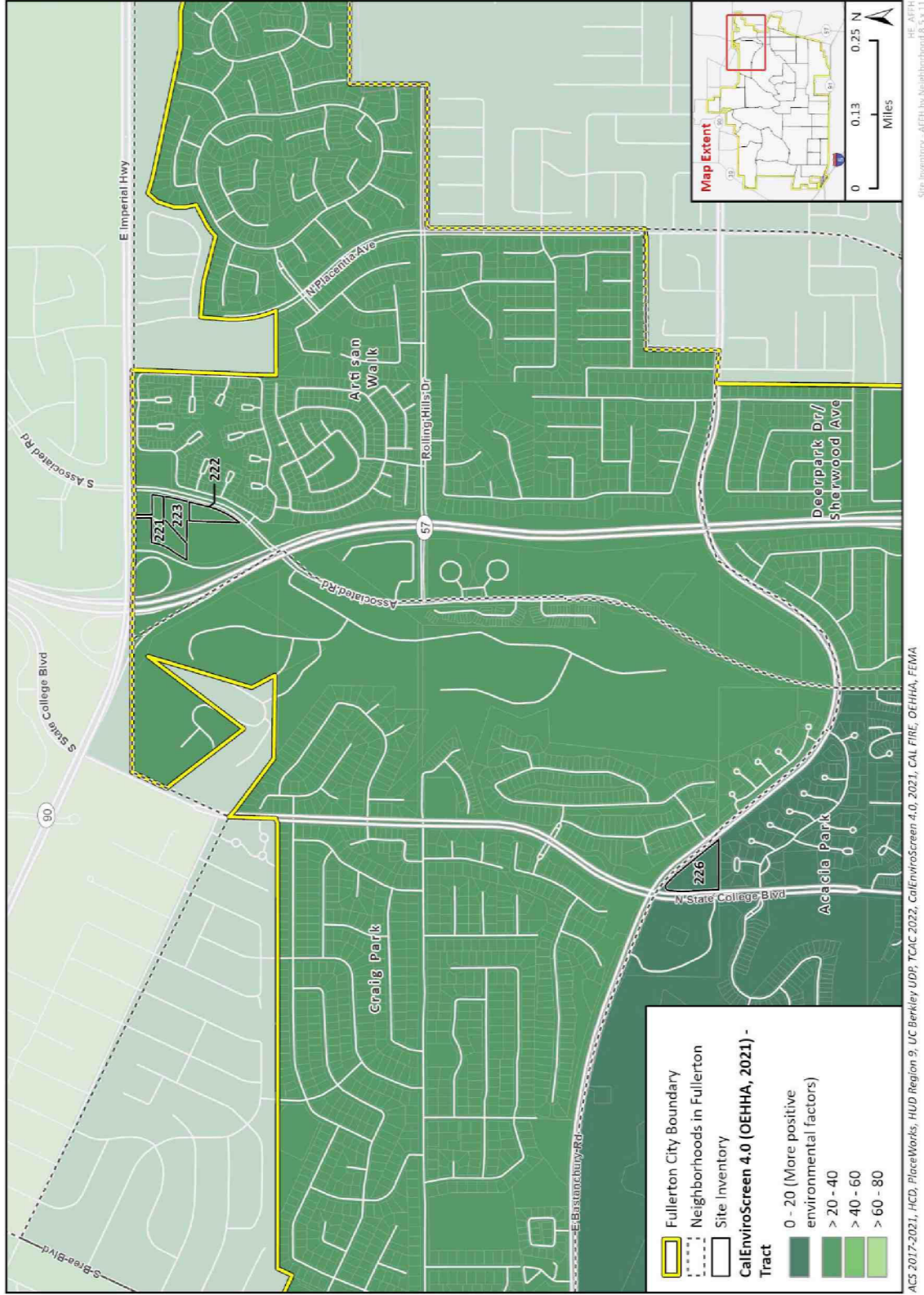
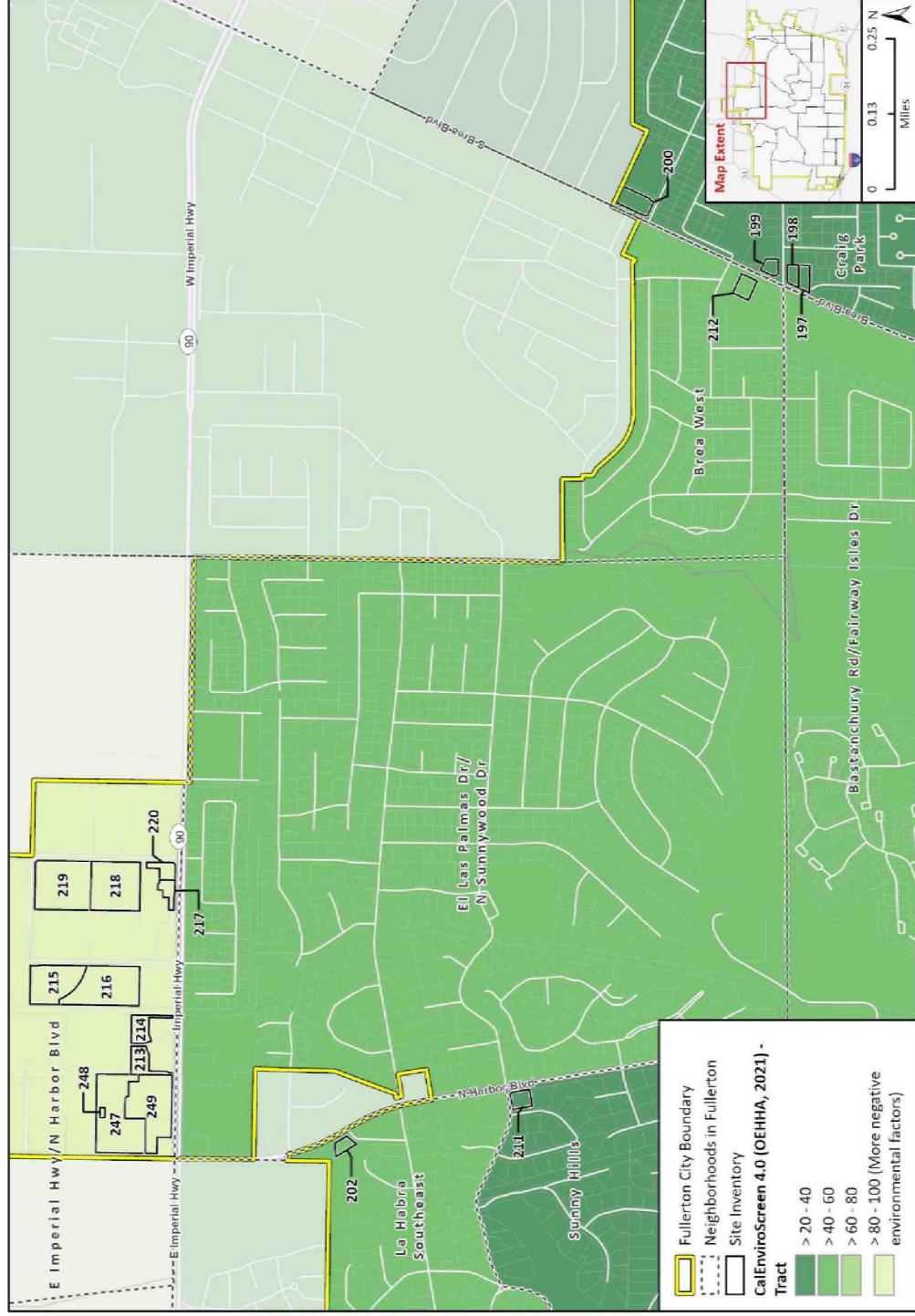
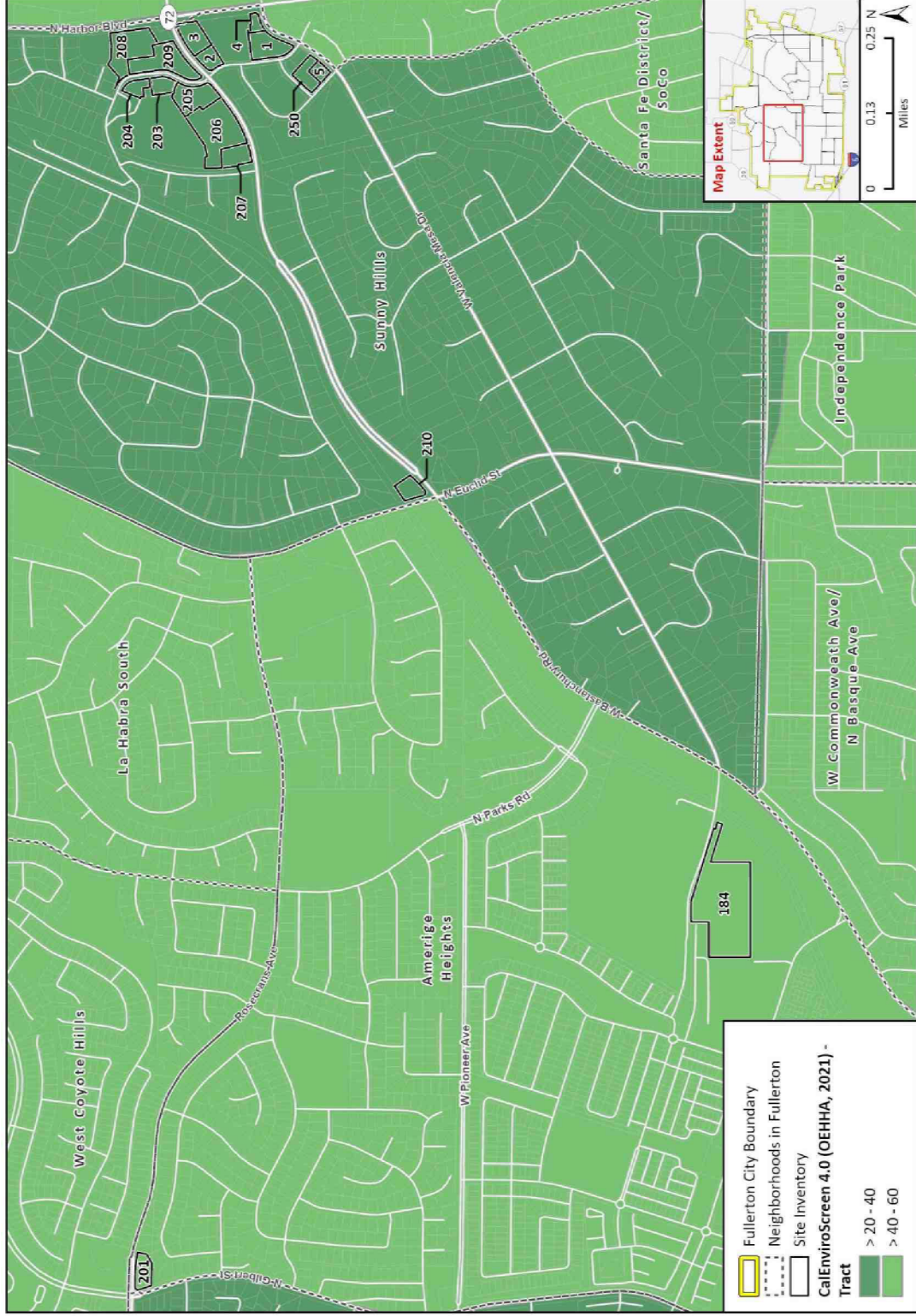


Figure E-101 Housing Opportunity Sites by CalEnviroScreen Score (E Imperial Hwy/N Harbor Blvd, La Habra Southeast, Sunny Hills, El Las Palmas Dr/N Sunnywood Dr)



ACS 2017-2021, HUD, PlaceWorks, HUD Region 9, UC Berkeley UDP, TCAC 2022, CalEnviroScreen 4.0, 2021, CAL FIRE, OEHHA, FEMA
Site Inventory - AFH by Neighborhood 8.5 x 11
HE AFH

Figure E-102 Housing Opportunity Sites by CalEnviroScreen Score (West Coyote Hills, Amerige Heights, La Habra South, W Commonwealth Ave/N Masque Ave, Independence Park, Sunny Hills, Santa Fe District/SoCo)



ACS 2017-2021, HCD, PlaceWorks, HUD Region 9, UC Berkeley UDP, TCAC 2022, CalEnviroScreen 4.0, 2021, CAL FIRE, OEHH, FEMA

Figure E-104 Housing Opportunity Sites by CalEnviroScreen Score (Nutwood Ave/N Mountain View Pl, California State University Fullerton, Bradford Park, Deerpark Dr/Sherwood Ave)

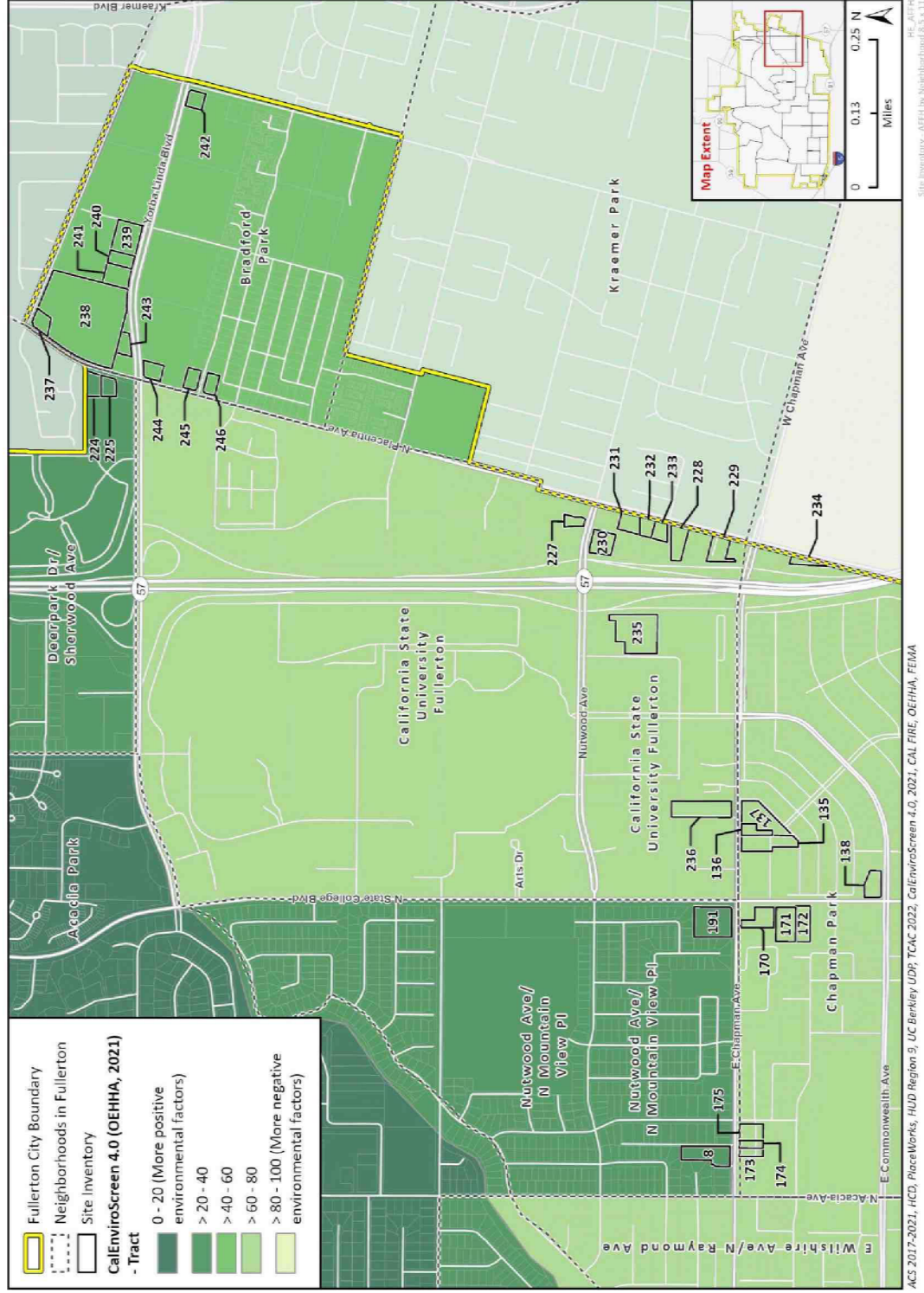


Figure E-105 Housing Opportunity Sites by CalEnviroScreen Score (The Fox Block, Byerrum Park, Rancho La Paz, Nutwood Ave/N Mountain View Pl, Chapman Park, California State University Fullerton)

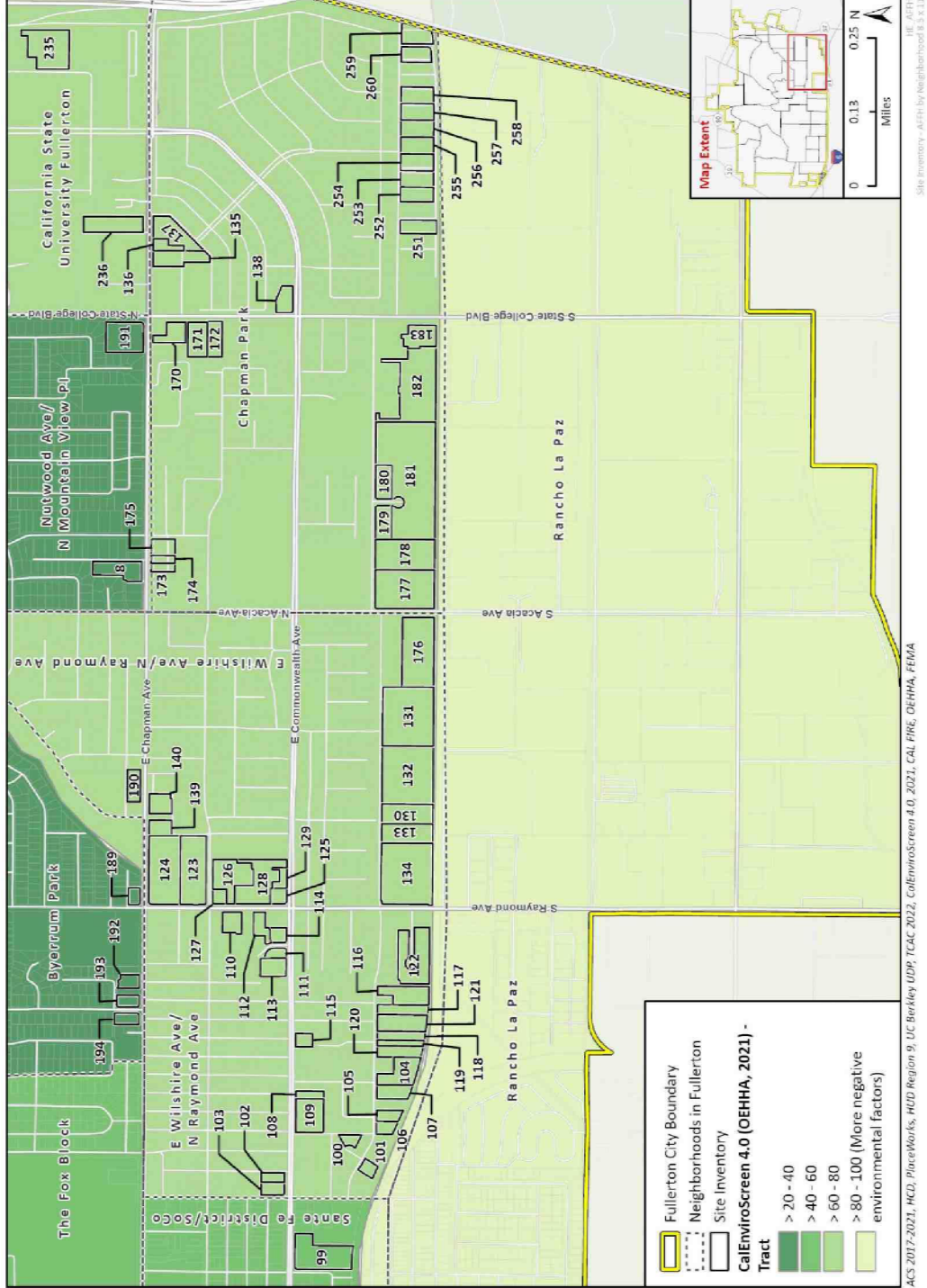
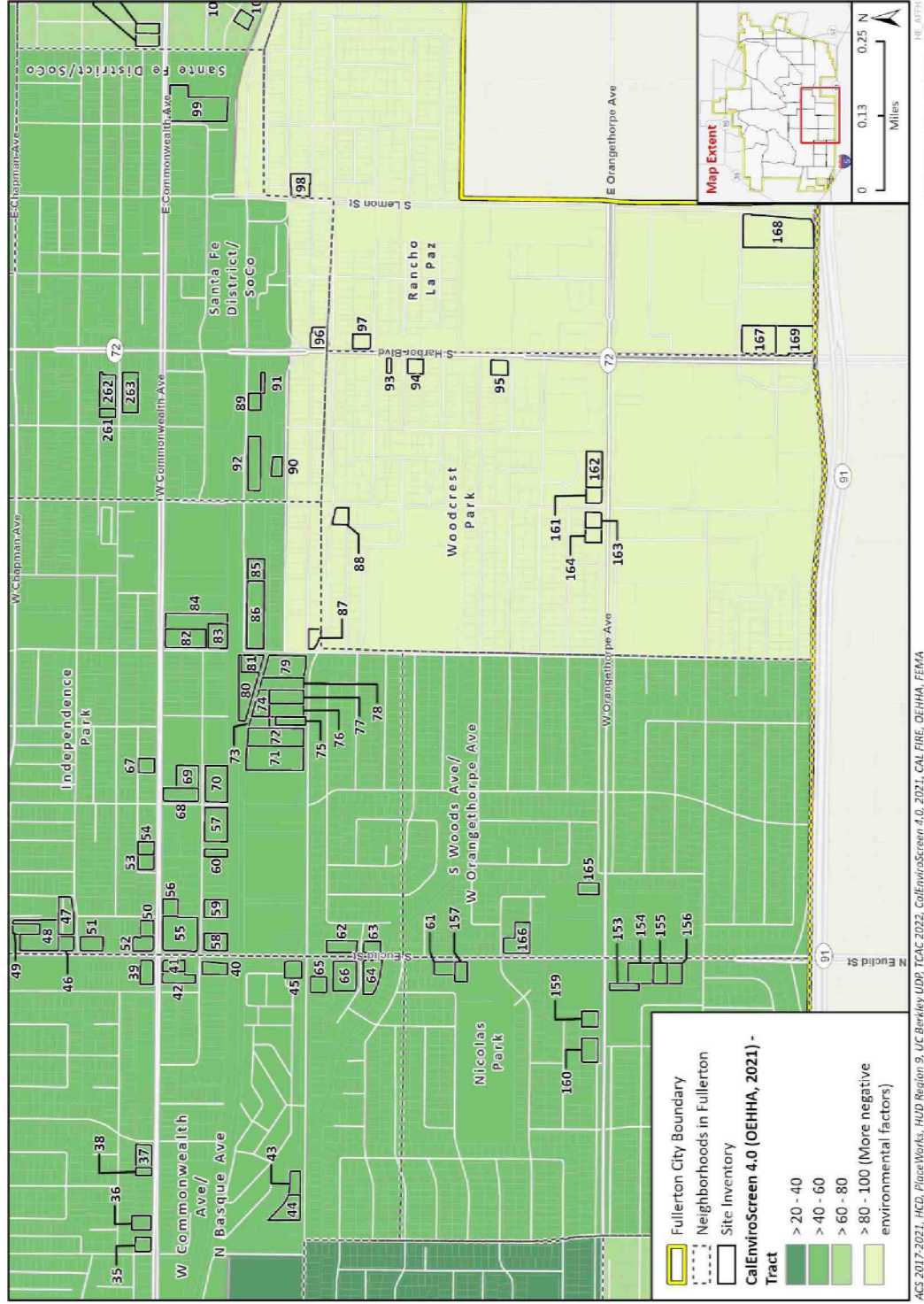


Figure E-106 Housing Opportunity Sites by CalEnviroScreen Score (W Commonwealth Ave/N Basque Ave, Independence Park, S Wood Ave/W Orangethorpe Ave, Woodcrest Park, Rancho La Paz, Santa Fe District/SoCo)



ACS 2017-2021, HCD, PlaceWorks, HUD Region 9, UC Berkeley UDR, TCAC 2022, CalEnviroScreen 4.0, 2021, CAL FIRE, OEHHA, FEMA

Figure E-107 Housing Opportunity Sites by CalEnviroScreen Score (Sunny Hills, Santa Fe District/SoCo, Bastanchury Rd/Fairway Isles Dr, The Fox Block)

